

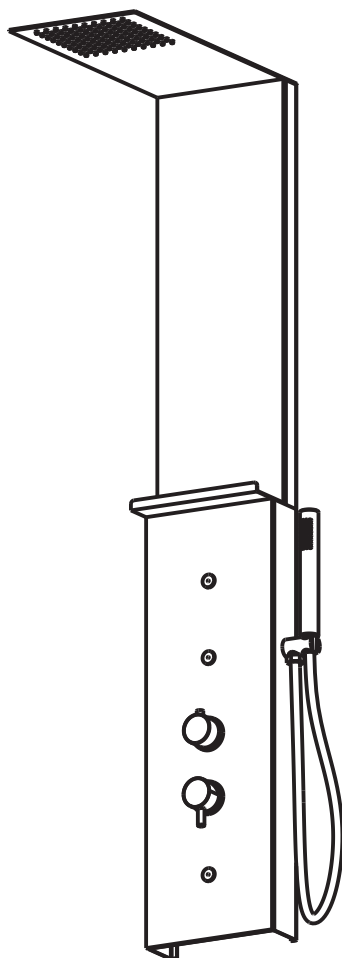


**VANITADOCCE**  
SHOWERS

# **BILBAO**

---

## **PANNELLO DOCCIA**

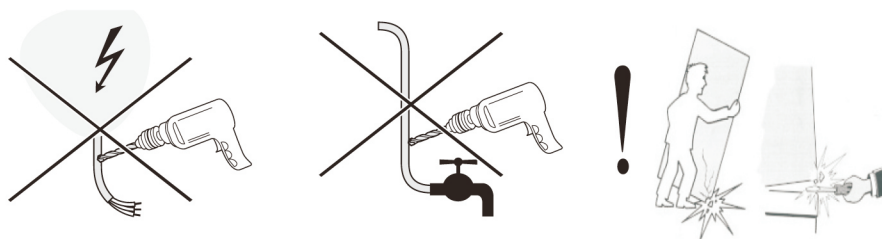


**600.900.320**



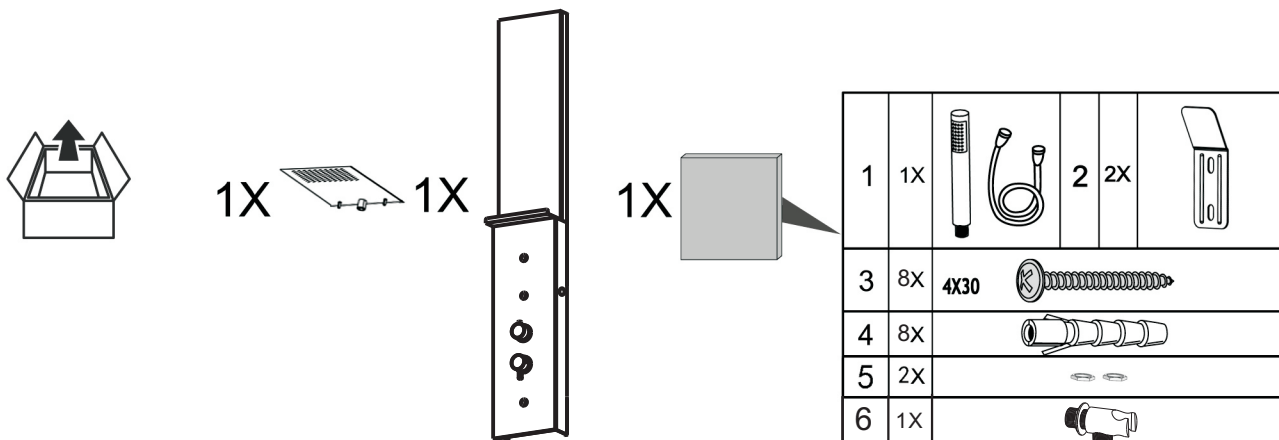
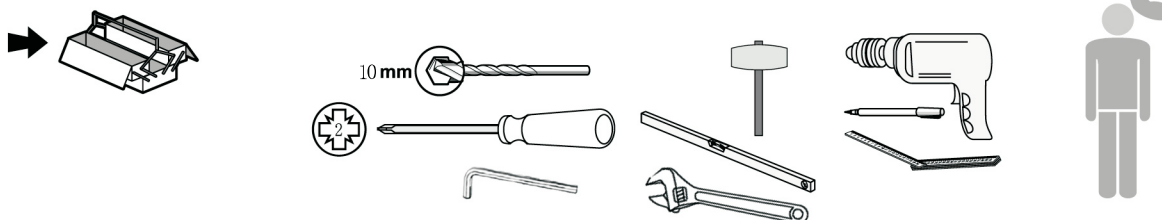
## VANITADOCCE

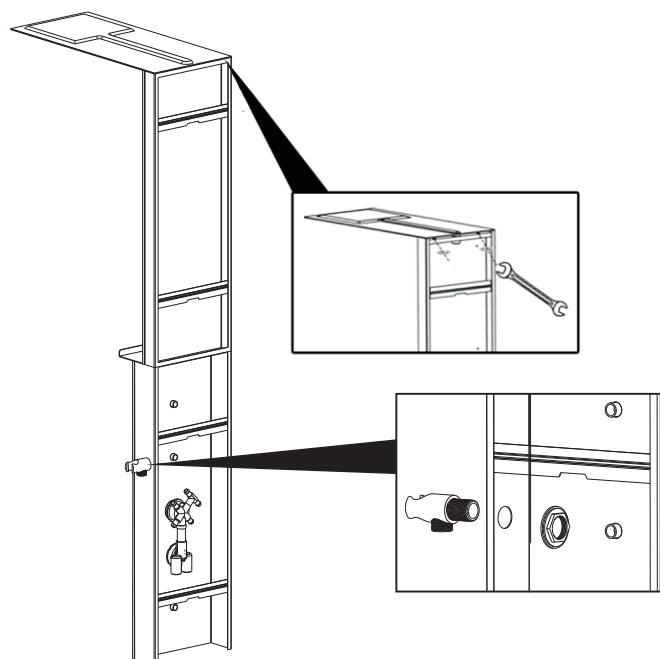
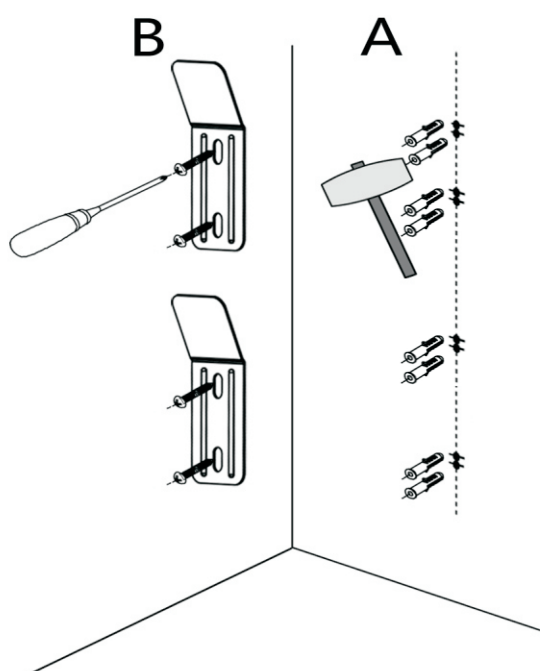
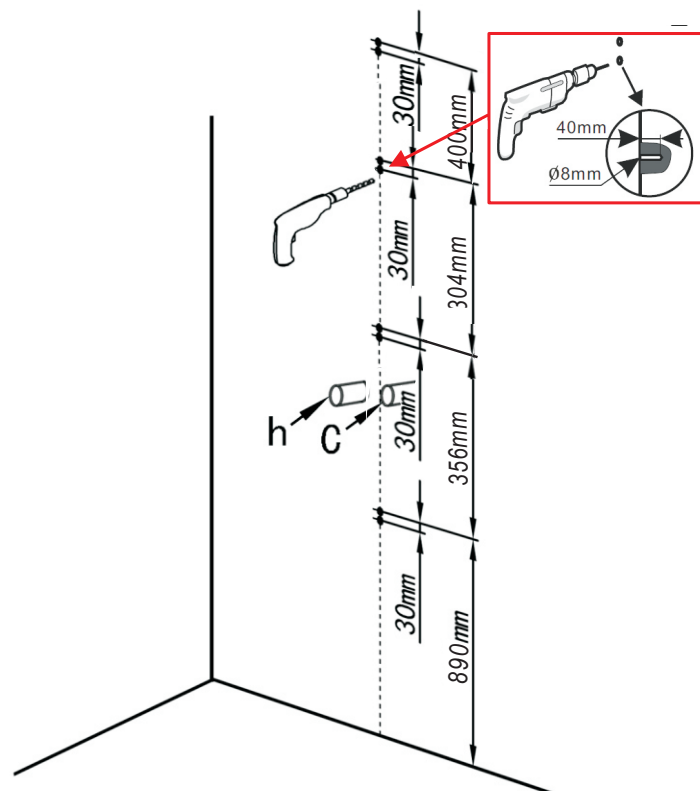
### SHOWERS



- (GB)** Please check that all products are present and undamaged before commencing installation. We will not be held responsible for visible defects after the product is installed. Do not use thinners. After unpacking, always protect it (for example with cardboard) when placing on the floor. Installation instructions for skilled craftsmen. Following installation, hand the installation instructions over to the end consumer.

- (IT)** Prima del montaggio è necessario verificare che i prodotti siano integri e privi di danni. Dopo l'installazione, il produttore non si assume più la responsabilità di eventuali vizi apparenti. Non utilizzare diluenti! Quando si toglie dalla confezione, appoggiarlo sempre sul pavimento proteggendolo con cartone. Istruzioni di montaggio per l'installatore specializzato. Le istruzioni di montaggio devono essere consegnate al cliente finale al termine del montaggio.

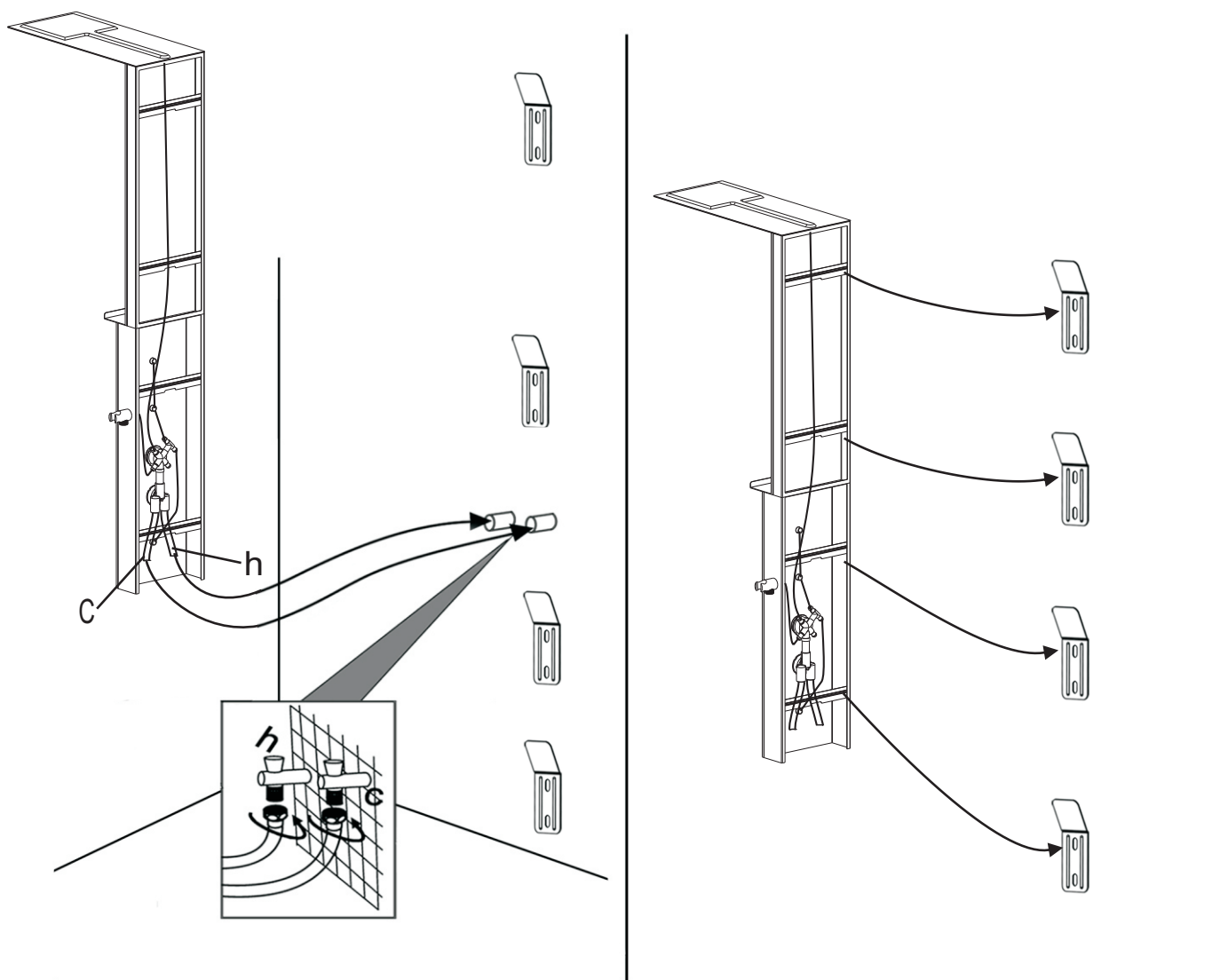






# VANITADOCCE

SHOWERS

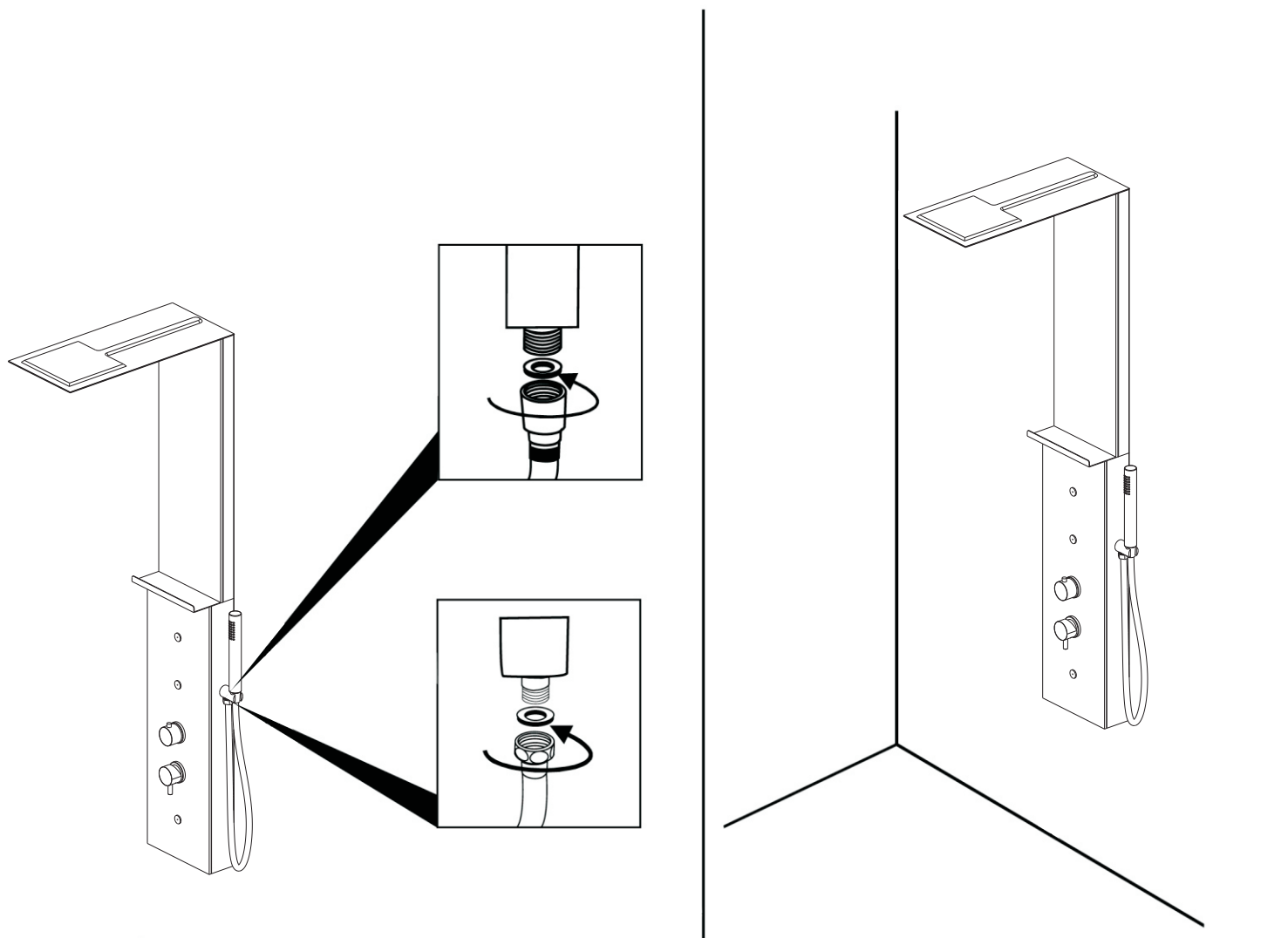






# VANITADOCCE

SHOWERS



**VANITADOCCE**  
SHOWERS

[WWW.VANITADOCCE.COM](http://WWW.VANITADOCCE.COM)

PROGETTATO E IMPORTATO  
DA VANITA DOCCE SRL