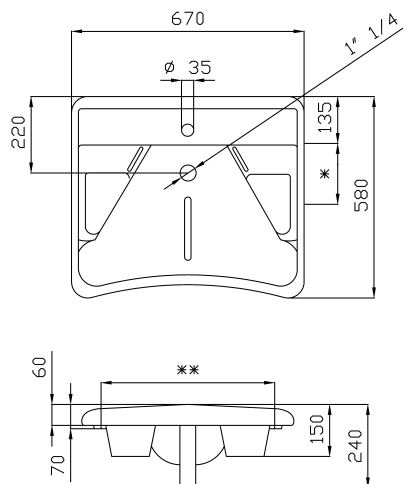


## PRODUCT TECHNICAL SHEET

### TECHNICAL DRAWING



### PHOTO



### PRODUCT FAMILY: SANITARYWARE

**CODE:** 400-EA

**DESCRIPTION:** Washbasin. "Basic" series.

### APPROVALS/CERTIFICATIONS:

TUV system certification UNI EN ISO 9001:2008.

Declaration of Conformity according to European Council Directive 89/106/CEE for construction

products as regards sanitary appliances.

Reference regulations: UNI EN ISO 14688:2007.

### PRODUCT FEATURES:

Ergonomic washbasin with elbow rests and concave front edge to facilitate wheelchair users.

Wall mount by means of mounting holes or fixed brackets. Manual or pneumatic tilting mechanism.

### FIXING/INSTALLATION:

N° 2 mount holes, centre distance  $330 \pm 10$  mm.

Choose the plugs according to the type of wall.

N° 4 connections for fixed brackets (Art. 401-E), pneumatic mechanism (Art. 403-E)

or manual mechanism (Art. 405-E).

### PRODUCT COMPOSITION:

Washbasin - Vitreous China - Enameled

### MAINTENANCE:

Check the correct fastening of the washbasin periodically.

Clean with water and soap or other suitable products, do not use abrasive or corrosive agents. Dry with a soft cloth.

### TOLERANCES:

GENERAL TOLERANCES

$\pm 5\%$  on all dimensions

### PACKAGING OF THE PRODUCT:

Packed in cardboard box 710 x 220 x 615 mm. Packed on pallet in case of purchase of multiple units.

Weight: 21 kg